



Welcome! We will get started momentarily.

- Using Chat, please enter your name and organization.
- How to use Chat:
 1. Click on the Chat icon.
 2. Select who you want to send your message to (individual or everyone).
 3. Type and send your message.
- Please use Chat to submit questions for our speakers.

Nursing Home Quality Essentials Spotlight: Infection Prevention

Resilience in Action: Nursing Home Teams Share Strategies for Sustaining Respiratory Vaccination Rates

Tuesday, February 4, 2025

Kara Rapien, RN, Quality Improvement Facilitator

Micki Reyman, RN, Sr. Quality Improvement Facilitator



WE'RE BACK!

NURSING HOME QUALITY ESSENTIALS



SPOTLIGHT: INFECTION PREVENTION

Tuesdays & Thursdays | 11 a.m. MT / Noon CT

As part of a contract extension from CMS, we're thrilled to relaunch Nursing Home Quality Essentials, focusing on infection prevention and control!

Join us twice a week for engaging 30-minute sessions tailored for long-term care providers. Each session will spotlight a new aspect of infection prevention, with actionable insights and strategies to integrate directly into daily practices.

Topics may include vaccines, healthcare-acquired infections, rehospitalizations, NHSN reporting, health literacy and more — each aimed at enhancing your infection prevention efforts.

SCAN TO REGISTER



or go to

www.telligenqiconnect.com/calendar



Vaccinate & Protect!

Telligen's [Adult Vaccine Toolkit](#) compiles practical resources for nursing homes in their efforts to improve vaccination rates.

Telligen's [Vax Hub](#) provides additional on-demand tools, resources, and learning modules.

Together, these resources empower facilities to safeguard our most vulnerable populations.

Resilience in Action: Nursing Home

- Teams Share Strategies for Sustaining Vaccination Rates

Objectives

- Describe effective strategies to achieve recommended COVID-19 vaccination rates in residents
- Explain how Medicare Care Compare data can assist nursing home teams with tracking and monitoring facility, state and national vaccination rates
- Identify opportunities for scheduling a vaccine clinic

Why resilience?

- The capacity to withstand or to recover quickly from difficulties; toughness

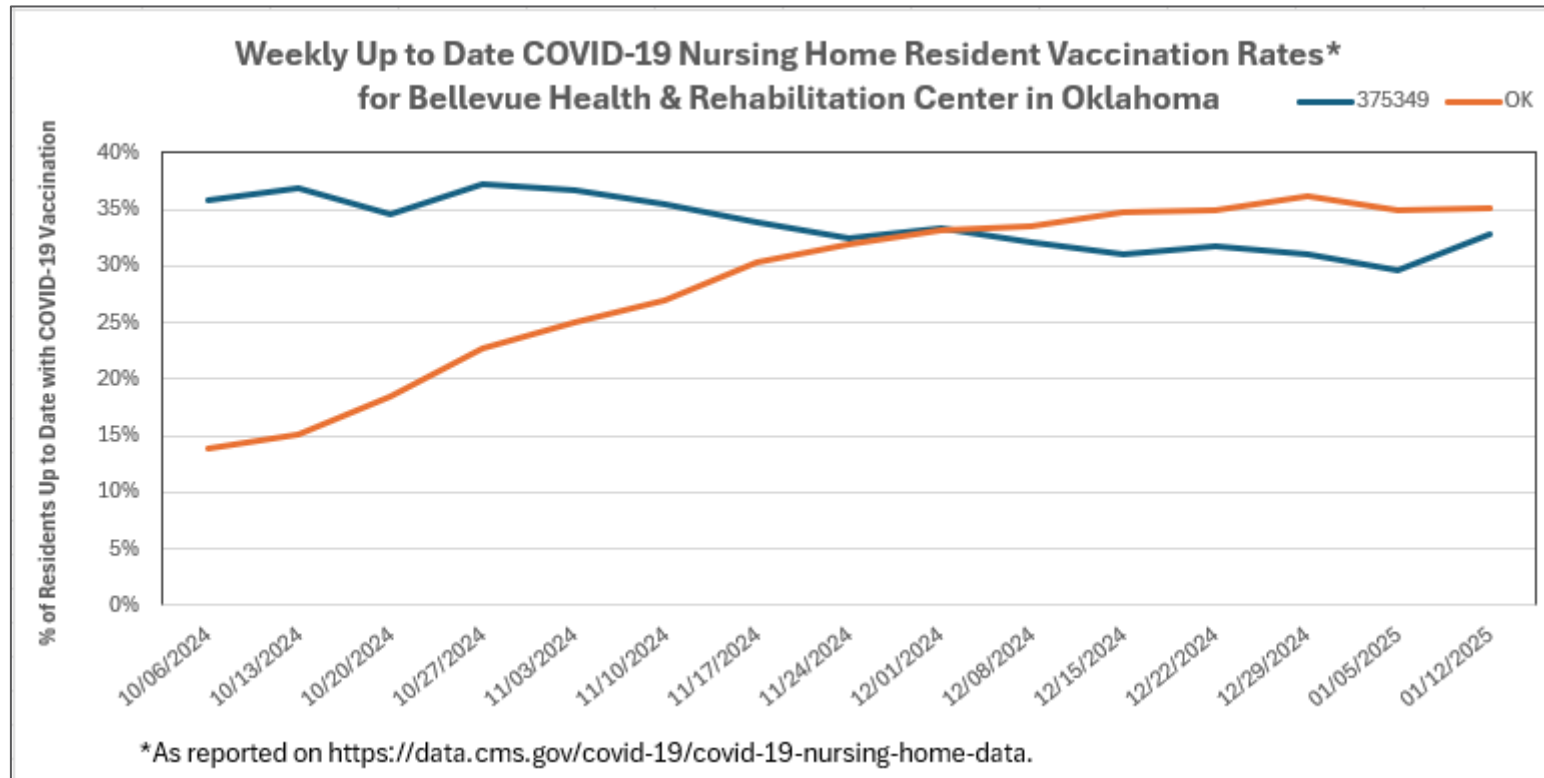
"Resilience is the ability to find your energy, motivation and focus when you feel depleted."

— Unknown

https://www.merriam-webster.com/dictionary/resilience?utm_source=chatgpt.com



Bellevue Health & Rehab Center Data Compared to State



Bellevue Health & Rehab Center, Oklahoma City, OK

- Pharmacy partnership
- Invitation to family for vaccine meeting
- Resident Town Hall Q&A in dining room before lunch
- 1:1 follow up with residents not able to join Town Hall
- Consistent follow up with residents
- Longevity of leadership and staff

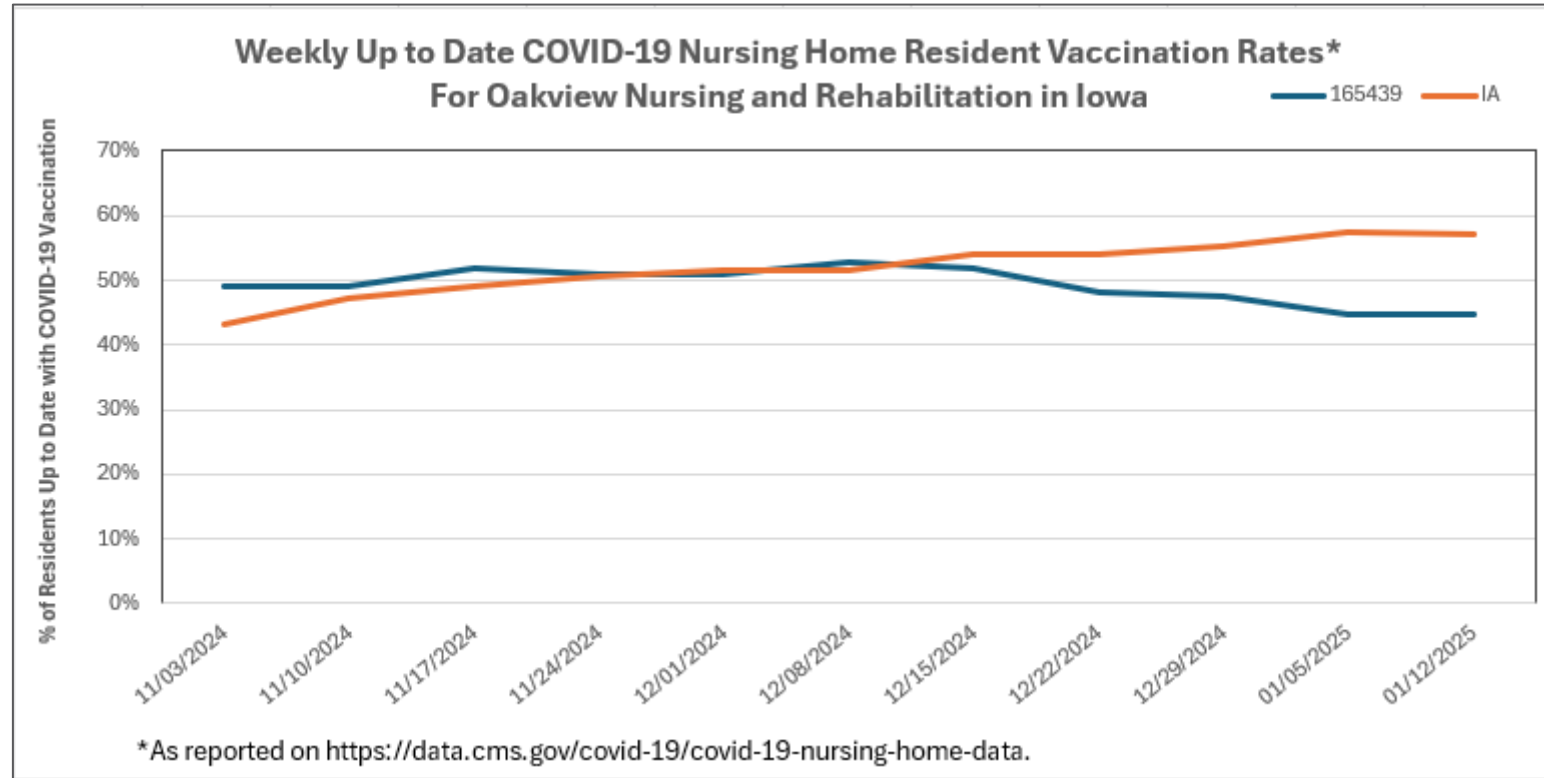
Tamara Meadows, RN, GERO-BC

Director of Nursing

tamara@bellevueokc.com



Oakview Nursing and Rehabilitation Data Compared to State



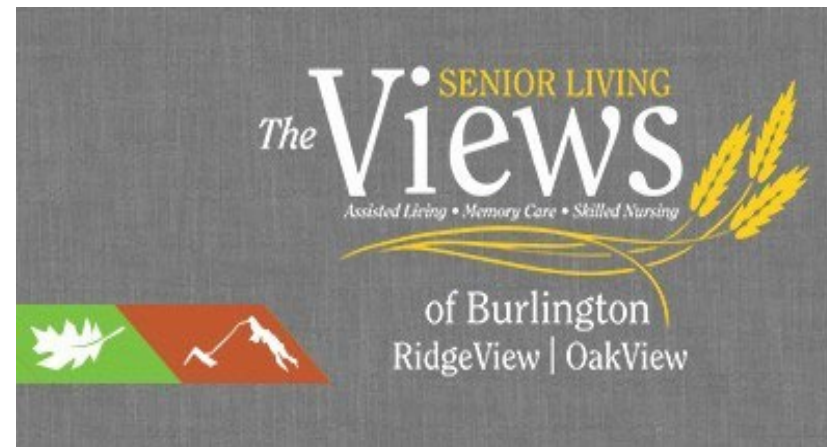
Oakview Nursing and Rehab, Burlington, IA

- Pharmacy partnership
- Residents trust staff and feel secure if vaccine is given by staff
- Vaccine offered on admission
- Vaccine provided anytime resident requests
- Good care transitions with hospital
- Many staff with 5–10-year longevity

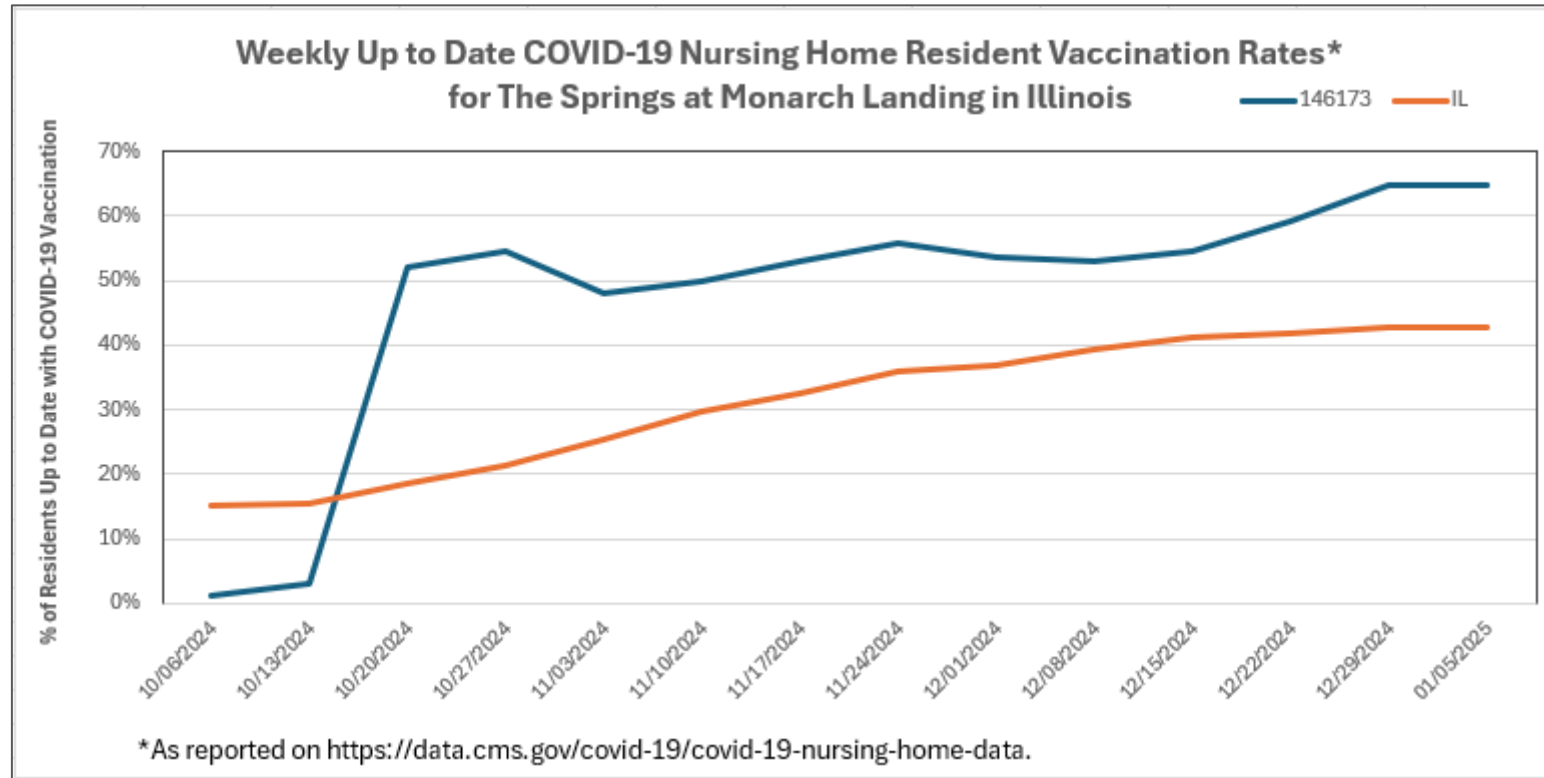
Audra Larison

LNHA

alarison@viewsofburlington.com



Springs Monarch Data Trend Graph Compared to State



The Springs at Monarch Landing, Naperville, IL

- Pharmacy relationship
- 1:1 follow up with residents
- Utilize ICARE to track
- Longevity of staff and Leadership
- Nurse and team support
- Immunization program - organization and good communication

Margaret Antkowiak, RN, BSN

Assistant Director of Nursing

Mantkowiak@monarchlanding.net

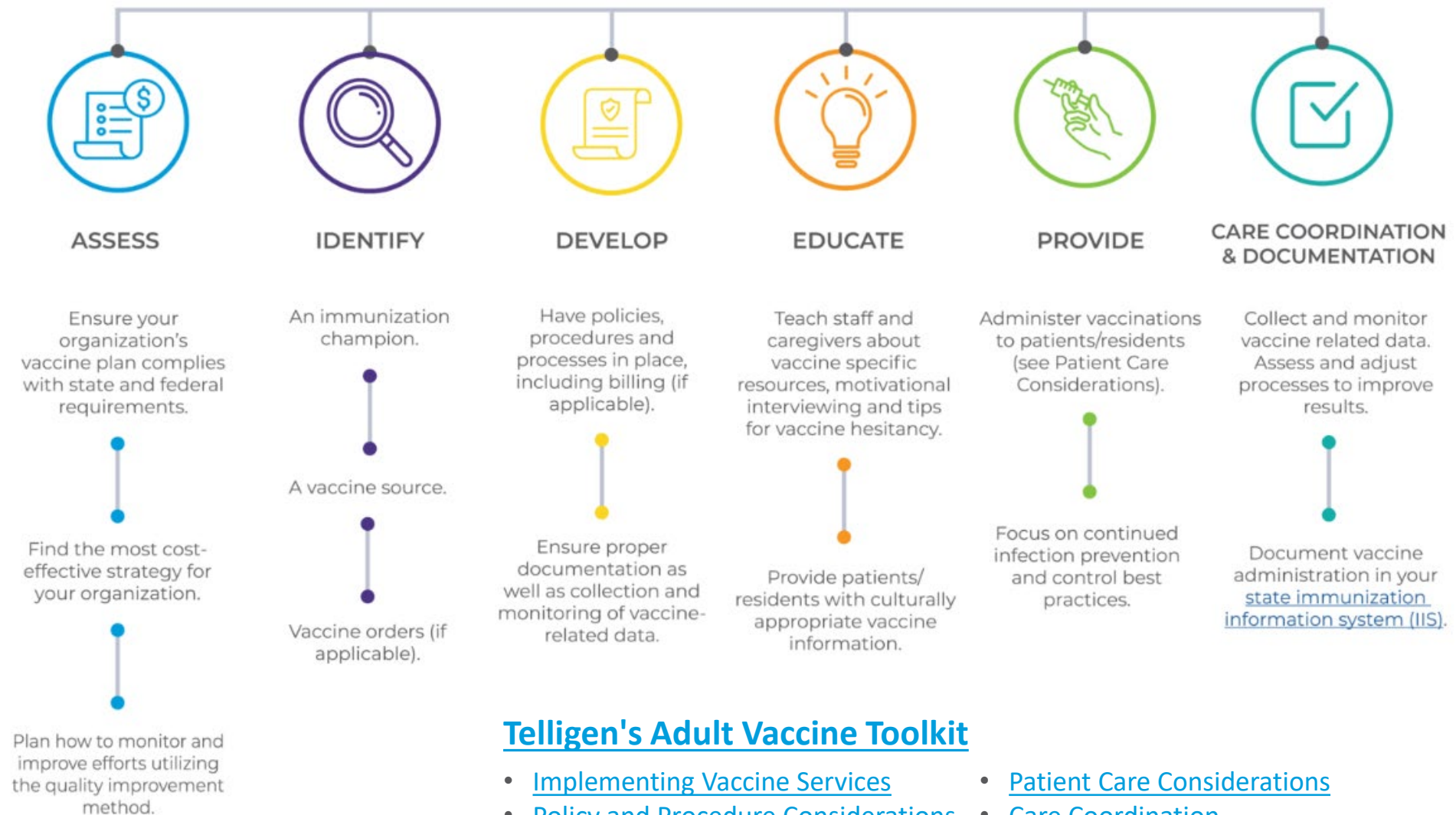


What Strategies Do these Nursing Homes Have in Common?

- Partnerships with pharmacies
- Vaccines offered on admission and provided when residents request
- Vaccine clinics scheduled routinely
- Leadership strives for quality improvement
- Many leadership and staff have 5-10 years longevity
- Encouraging and motivational
- Creative strategies for engaging residents
- Knowledgeable of, and adheres to, state and national respiratory vaccine guidance



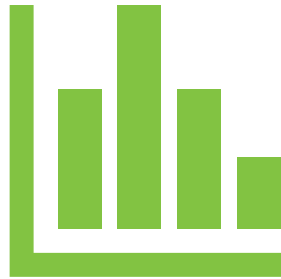
Next Action Steps - Organize the Immunization Program Goal



Telligen's Adult Vaccine Toolkit

- [Implementing Vaccine Services](#)
- [Policy and Procedure Considerations](#)
- [Patient Care Considerations](#)
- [Care Coordination](#)

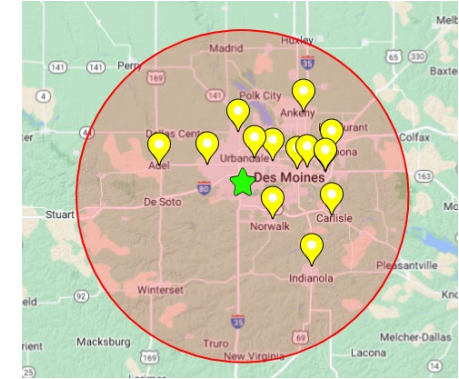
Telligen QI Connect™ Supports Nursing Homes with Low Vaccine Rates



NHSN data reveals low COVID-19 vaccine uptake among residents



Support for nursing homes with addressing COVID-19 vaccine challenges and implementing mitigation strategies



Vaccine clinic partners identified in Telligen regions



> Questions?



Thank You for Attending Today's Session!

Your feedback is valuable!

Please stay on to complete a brief 5-question assessment.

Your anonymous feedback helps us improve future sessions.

An open-ended question is included for additional comments.

Thank you again for your participation!

Contact Us



- General Inquiries | QIConnect@telligen.com
- www.telligenqiconnect.com
- Nursing Home Team | nursinghome@telligen.com



LinkedIn: <http://www.linkedin.com/company/Telligen-qi-connect>



Facebook: <https://www.facebook.com/telligenqiconnect>

NURSING HOME QUALITY ESSENTIALS

SPOTLIGHT: INFECTION PREVENTION



Tuesdays & Thursdays | 11 a.m. MT / Noon CT

Don't miss out on these upcoming offerings:

Thursday, February 6, 2025

Navigating the Landscape of COVID-19 and influenza in Long-Term Care: Insights from Dr. Greg Gahm

Tuesday, February 11, 2025

NHSN Office Hours

Thursday, February 13, 2025

Engage, Inspire, Learn: Creative and Fun Approaches to Interactive Training

SCAN TO REGISTER



or go to

www.telligenqconnect.com/calendar

