



Welcome! We will get started momentarily.

- Using Chat, please enter your name and organization.
- How to use Chat:
 1. Click on the Chat icon.
 2. Select who you want to send your message to (individual or everyone).
 3. Type and send your message.
- Please use Chat to submit questions for our speakers.

Preventing Harm and Risks of Opioid Overdose in Long-Term Care: What's Your Role?

February 15, 2024 | Session 2

Megan Myers, PharmD

Clinical Pharmacy Specialist, Telligen



Before We Begin

- Be sure to add qiconnect@telligen.com to your trusted list of email contacts
 - If you unsubscribe, you'll miss out on every communication we share
- We're on social media, follow us for updates and events!



Facebook: <https://www.facebook.com/telligenqiconnect>



LinkedIn: <https://www.linkedin.com/company/telligen-qi-connect>



Join Us

Join Telligen QI Connect™ for access to quality improvement coaching, resources, educational events, peer-to-peer collaboration and data-driven improvement collaborative series.

[Learn More](#)

Partnering to Improve Health Outcomes Through Relationships and Data

Telligen QI Connect™ is a network of healthcare quality improvement initiatives that are data-driven and locally-tailored to improve healthcare quality and outcomes by implementing and spreading evidence-based and best practices. They aim to make healthcare safer, more accessible and more cost-effective through the Centers for Medicare & Medicaid Services (CMS) Quality Innovation Network-Quality Improvement Organization (QIN-QIO) and Hospital Quality Improvement Contractor (HQIC) programs. Telligen QI Connect™ is operated by Telligen, which is funded by CMS to deliver improvement services at no cost to you or your organization.

Telligen QI Connect™ encompasses our work as a QIN-QIO across Colorado, Illinois, Iowa and Oklahoma, and our work as a HQIC across more than a dozen states.

[Join Us](#)



www.telligenqiconnect.com

Visit our website to view featured stories, access resources, listen to our podcasts, log in to the Secure Portal, watch recorded events or register for upcoming ones.

What's Your Role in this Pilot?



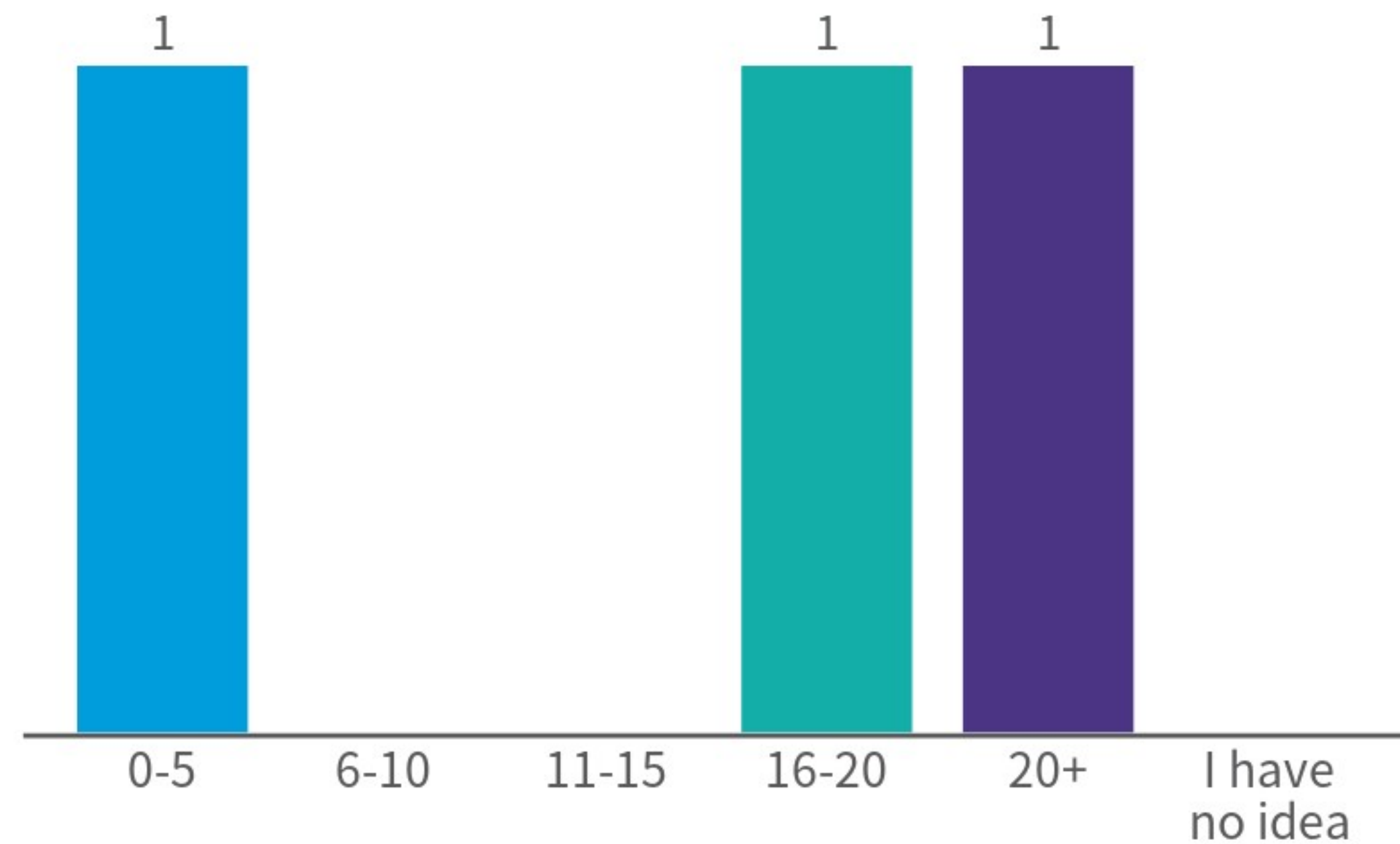
- Engage, learn and collectively recognize gaps in processes
- Implement action items between sessions
- Work with your Quality Improvement Facilitator
- Identify relevant interventions that will be used in Telligen's QIN-QIO network

Objectives

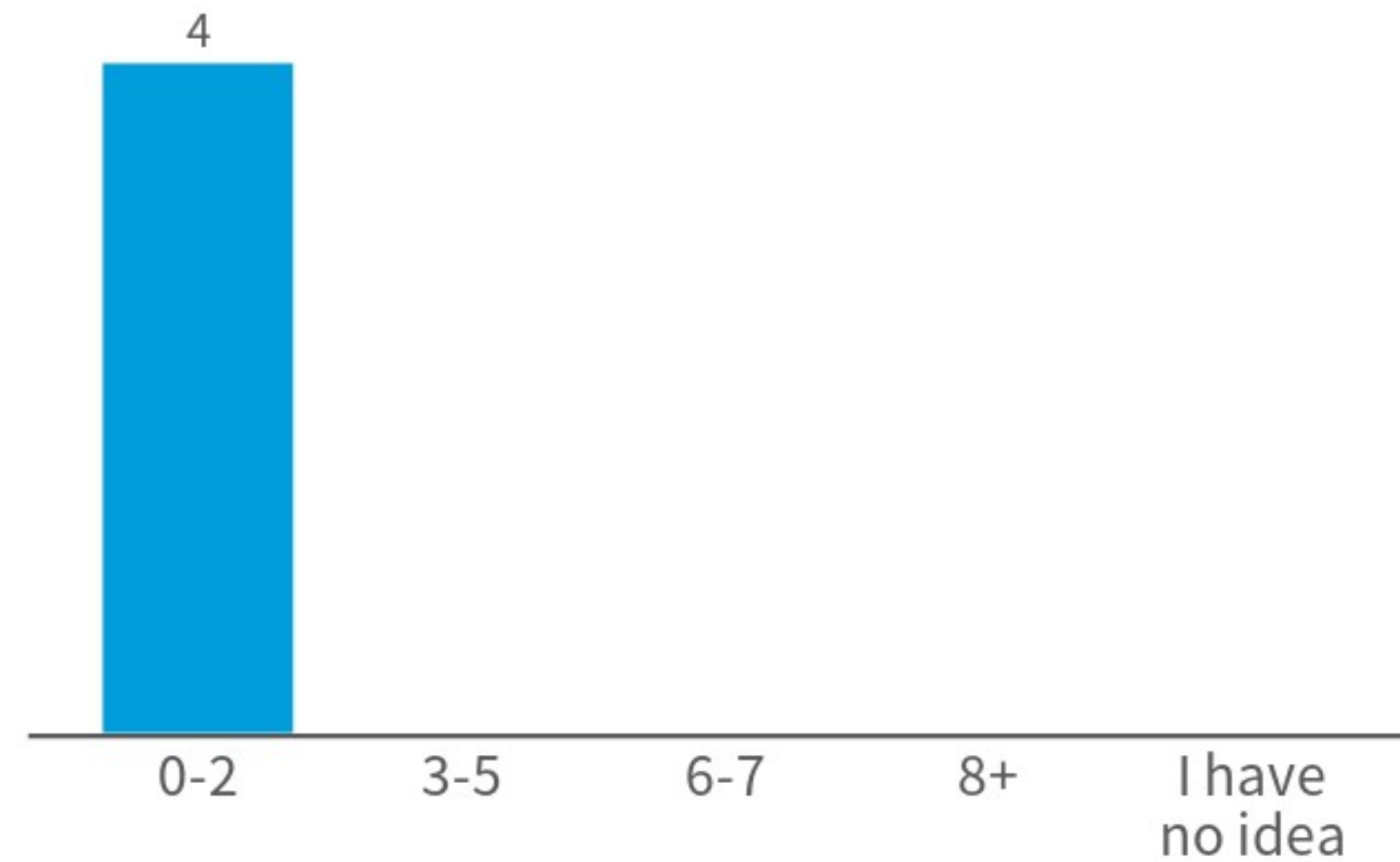
- Review policies and process to prevent opioid overdose
- Identify residents at highest risk for opioid-related overdose
- Recognize and response to an opioid overdose



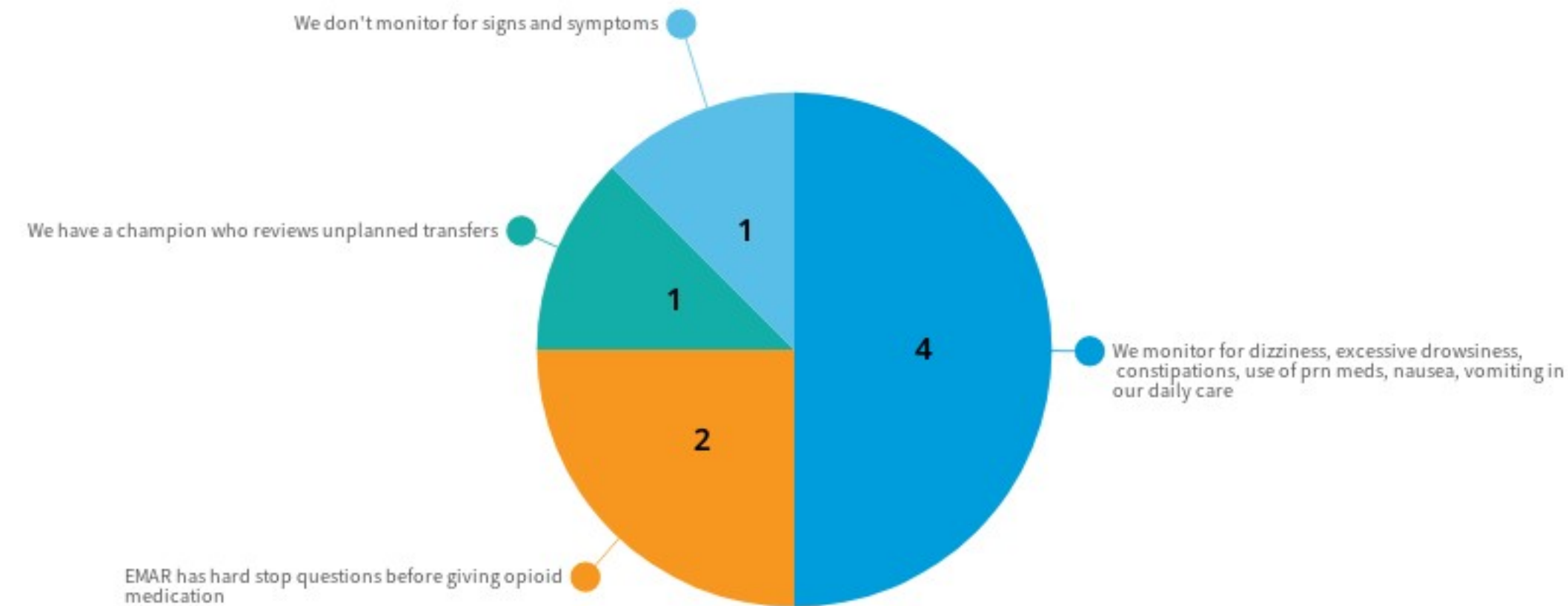
How many residents did you have on opioids in last 7 days?



How many residents receiving an opioid were transferred to the hospital in the past month?



How do you monitor for opioid signs and symptoms of adverse event? Select all that apply.



Policies and Processes

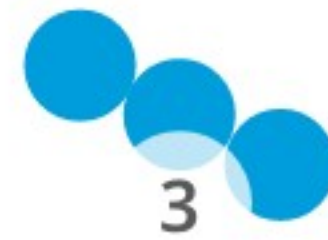


- Do you have a champion?
- Evidenced-based
- Staff readiness
- Logistics
- Communication

Which of the following is included in your current naloxone policies and procedures (P&P)? Select all that apply.



Naloxone in E-kit



Staff training on signs and symptoms of opioid overdose



Staff training on administration of naloxone



Staff training on stigma related to opioids, overdose & naloxone



Documentation of staff training



Standing order for administering naloxone, prn order on resident charts when on an opioid



Champion identified to review P&P and monitor staff training



Cases reviewed during monthly psychpharm meeting



Pharmacist invited to psychpharm meeting

Preventing Opioid Overdose (Slide 1 of 2)

- [Opioid Prescribing and Pain Management](#)
 - Tapering Opioids
 - [CDC Pocket Guide: Tapering Opioids for Chronic Pain](#)
 - [CDC Tapering Opioids Training](#)
 - [CDC Summary of the 2022 Clinical Practice Guidelines for Prescribing Opioids for Pain](#)
 - Medication reconciliation and review process
 - Review for other high-risk medications
 - How are pharmacy recommendations reviewed and followed up on?



Preventing Opioid Overdose (Slide 2 of 2)



- Risk Assessment: identify those at highest risk of experiencing an opioid-related overdose
 - [Identifying Risks When Prescribing Opioids \(cdc.gov\)](#)
 - [Calculating Total Daily Dose of Opioids For Safer Dosage \(cdc.gov\)](#)
 - Are residents that are prescribed opioids evaluated for risk?
 - Are those at higher risk flagged for additional monitoring?
 - Are concurrent benzodiazepines being avoided?

Identifying Opioid Overdose

- Train staff
- Post signs and symptoms in resident rooms
 - [Preventing An Opioid Overdose \(cdc.gov\)](https://www.cdc.gov/od/oc/opioid-overdose-prevention/)
- Track when an adverse drug event (ADE) occurs
- Communicate change in symptoms/condition to provider

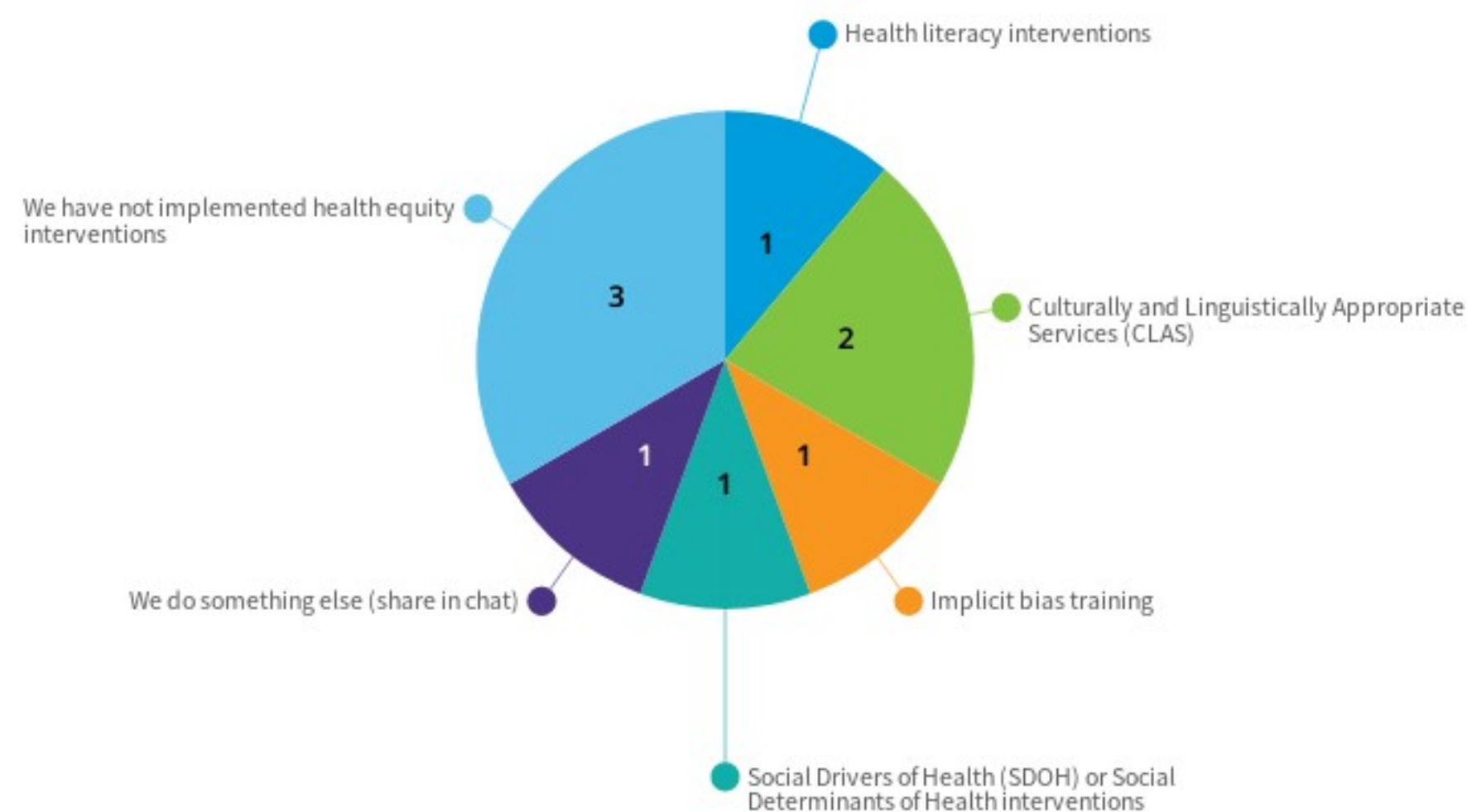


Responding to Opioid Overdose



- Emergency protocol in place – [CDC reference sheet](#)
- Easy access to naloxone
- Staff trained and confident in administration, monitoring and documenting
- Communication/coordination with provider
 - When naloxone is administered - any administration is tracked and considered an ADE

What health equity interventions does your nursing home utilize to help prevent opioid overdose and adverse drug events? Select all that apply.



Stigma and Health Equity



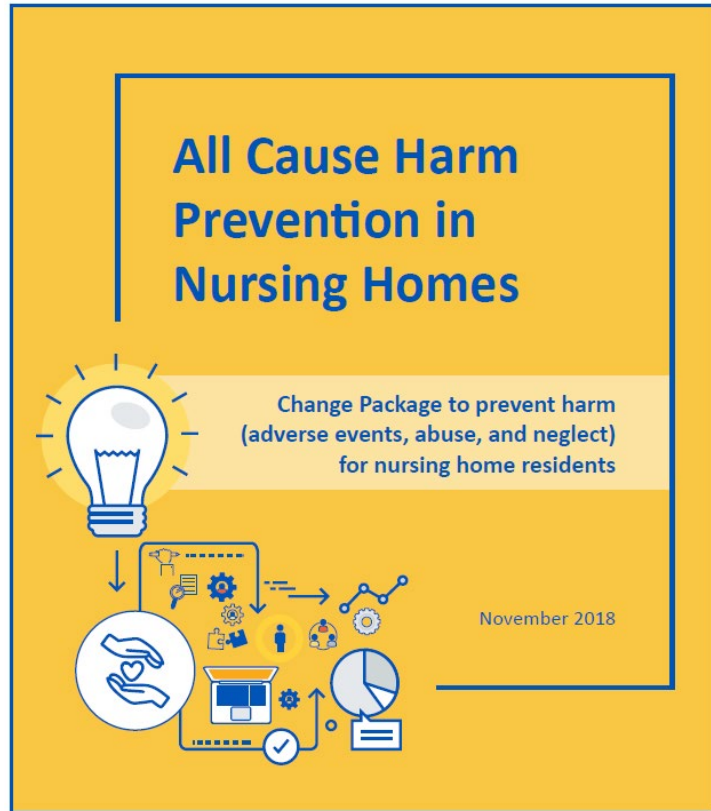
- Actively work with your staff to address possible stigma
 - Several risk factors can lead to an opioid overdose
 - Train staff to have conversations with residents and caregivers
 - Emphasize that naloxone is for emergency use only, similar to an EpiPen for someone with severe allergies or albuterol for someone with asthma
 - Explain risk (increased risk of overdose with risk factors) vs. benefit (pain control) and involve the resident/caregiver in decisions regarding opioid therapy
 - Empower caregiver with information on signs/symptoms of opioid overdose and naloxone

Stigma and Health Equity: Starting a Conversation

- CDC conversation starters:
 - [Naloxone and opioids](#)
 - [How to save a life with naloxone](#)
- Health literacy interventions:
 - [Health Literacy Universal Precautions Toolkit \(2nd Edition\), AHRQ](#)
 - [Teach-Back: Intervention, AHRQ](#)
 - [The SHARE Approach, AHRQ](#)
 - [Telligen's Health Equity Webpage](#)



Events Related to Medication – Prevention Pages 10-15



Includes:

- a) Foundational and Ongoing Education Topics to Consider
 - Educate
- b) Pre-Admission Practices
 - Review, discuss
- c) Admission Practices
 - Establish, provide, involve, reconcile, communicate, plan
- d) Ongoing Care Practices and Monitoring
 - Process management, communicate, identify, recognize
- e) Resources to Consider



> Open Discussion

Leave in Action: Create/Update Policies and Processes

- Identify a champion
- Review the facility's opioid medication and ADE policy and procedures for:
 - Completeness, clarity and clinical relevance
 - Which areas need improvement
 - Reducing opioid prescribing
 - Increasing access to naloxone
 - Staff training and readiness
 - Resident and caregiver engagement
- Check in with Telligen's Quality Improvement Facilitator for 1:1 support
- Be ready to share at Session 3!

Overdose and Naloxone Training Resources

- [Free LTC training](#) from University of RI
- [Red Cross](#)
 - Note: Evzio is no longer on the market, but all other information is still relevant)
- [Overdose Lifeline](#) – offers CE credits
- [CDC Training](#)
 - Note: Does not include administration of naloxone
 - [CDC video](#) for nasal naloxone
- Explore state or local public health department resources



Create a Plan for Attending Session Three



- Thursday, February 29: Session 3



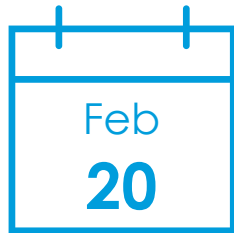
Take a call from your Telligen Quality Improvement Facilitator for 1:1 coaching

Upcoming Events



For all other events, visit our website:
<https://www.telligenqiconnect.com/calendar>

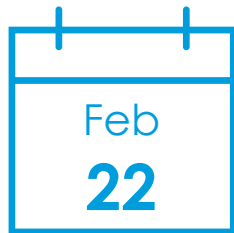
Don't miss out on these upcoming events:



Nursing Home Quality Essentials – Understanding MDRO and Antibiotic Utilization

12 – 12:30 p.m. CT

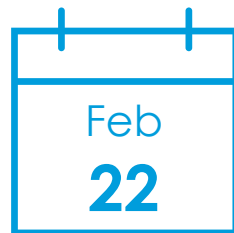
[Registration link](#)



Key Components of an Effective Workplace Violence Prevention Program: Leadership Engagement and Communication

12 – 12:45 p.m. CT

[Registration link](#)

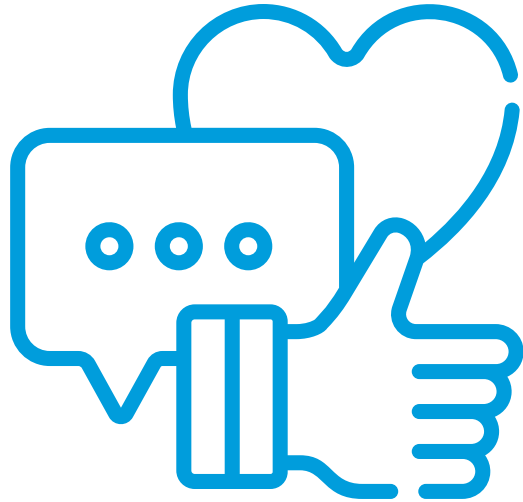


Nursing Home Quality Essentials – Fall Prevention

12 – 12:30 p.m. CT

[Registration link](#)

How Did We Do? Let Us Know:



Please participate in the post-presentation poll and fill out the assessment here:

- <https://www.surveymonkey.com/r/5BJHX2C>

Contact Us



- General Inquiries | QIConnect@telligen.com
- www.telligenqiconnect.com
- Nursinghome@telligen.com



This material was prepared by Telligen, a Quality Innovation Network-Quality Improvement Organization, under contract with the Centers for Medicare & Medicaid Services (CMS), an agency of the U.S. Department of Health and Human Services (HHS). Views expressed in this material do not necessarily reflect the official views or policy of CMS or HHS, and any reference to a specific product or entity herein does not constitute endorsement of that product or entity by CMS or HHS. This material is for informational purposes only and does not constitute medical advice; it is not intended to be a substitute for professional medical advice, diagnosis or treatment.