



Welcome to Telligen's Project ECHO® Series: Long-Term Care Medication Management of Blood Thinners

We will get started momentarily

- Using chat, enter your organization and state
- Please complete the poll

A Project ECHO® Series: Long-Term Care Medication Management of Blood Thinners

Session 2 – A Telligen Tool to Support Anticoagulant Safety

August 9, 2023

Kristen Ives, Telligen, Quality Improvement Facilitator



Project ECHO® Disclaimer

Project ECHO® collects registration, participation, questions/answers, chat comments and poll responses for some ECHO programs. Your individual data will be kept confidential. These data may be used for reports, maps, communications, surveys, quality assurance, evaluation, research and to inform new initiatives.

Before We Begin

- Be sure to add qiconnect@telligen.com to your trusted list of email contacts
 - If you unsubscribe, you'll miss out on every communication we share
- We're on social media, follow us for updates and events!

 Facebook: <https://www.facebook.com/telligenqiconnect>

 LinkedIn: <https://www.linkedin.com/company/telligen-qi-connect>

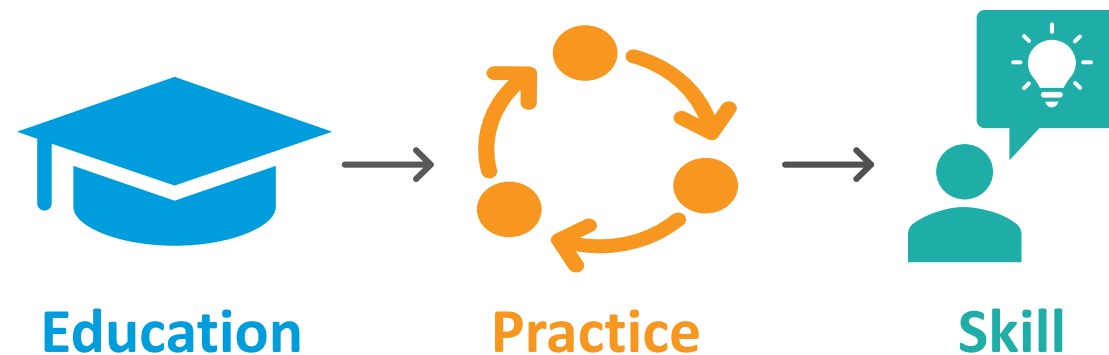
 Twitter: <https://twitter.com/TelligenQI>

- Visit [Telligen QI Connect™](#) to learn more about our services, view featured stories, access resources, watch recorded events and register for upcoming events
- NEW! Telligen's nursing home listserv – sign up [HERE](#)

Begin With the End in Mind

During the presentation, visualize and plan how you will use the information:

- What impactful actions can you take as a result of the information shared today?
- How are you able to increase collaboration within your network to ensure a true change in patient safety?
- Based on what you heard today, what activities do you currently have underway that can leverage immediate action over the next week, 30, 60 and 90 days?



Objectives

- Evaluate your current and potential anticoagulant safety processes
- Demonstrate the Telligen QI Connect™ Anticoagulant Safety Review Tool and how it can be used within your facility



Why Anticoagulant Safety?

- [Data](#) reveals that patients residing in nursing homes receiving anticoagulant therapy are more likely than others to suffer an adverse drug event (ADE) leading to hospitalizations and emergency department (ED) visits
 - Anticoagulant + Fall = ED Visit/Readmission
- Potential deficiency tags
- QAPI regulations [§483.75\(e\)\(1\)](#)
 - See LTC Survey Pathways in Survey Resources file in the [CMS Nursing Home](#) downloads




ADE Processes

Per QAPI requirements, you should already be assessing, identifying, reporting, investigating, analyzing, etc. high-risk adverse events and documenting performance improvement activities

- What is your process for recognizing an anticoagulant ADE?
 - Does everyone know what to watch for (signs and symptoms) and what the risks are?
 - Do staff know the importance of quickly identifying to potentially decrease poor outcomes (avoidable harm, admission to hospital, etc.)?
- Do you have good communication processes set up for your staff – who, how, when?
- Do you report on ADEs in your QA meetings?
- What is missing from your ADE recognition processes? Do you know what your first steps should be to improve it?

Telligen QI Connect™ Anticoagulant Safety Review Tool



Telligen QI Connect™ QIN-QIO
Quality Innovation Network - Quality Improvement Organizations
CENTERS FOR MEDICARE & MEDICAID SERVICES
EQUALITY IMPROVEMENT & INNOVATION GROUP

Partnering to improve health outcomes through relationships and data

Telligen QI Connect™ Anticoagulant Safety Review Tool

Utilize this tool to review and establish processes to monitor residents treated with anticoagulant medication for potential adverse drug events (ADEs). Using this tool is recommended upon resident admission, for current residents taking anticoagulants, at each MDS review, and with new or adjusted medication changes.

Please note that this tool is designed for quality improvement purposes and is not intended to guide clinical care decisions; nor is it guaranteed to be a comprehensive tool.

Resident Name/Identifier: _____

Prescribed anticoagulant(s): _____

Is there documentation of clinical indication?

Yes No

Documented diagnosis: _____

Do the physician orders include lab parameters/ranges?

Yes No

Do nurse notes and physician progress notes include documentation of labs?

Yes No

Per physician orders, how often are labs (PT/INR, PTT) to be done for this resident? _____

Date of last lab test: _____

Was the lab in desired/therapeutic range?

Yes No

Are anticoagulants reviewed during monthly pharmacy consultations?

Yes No

If on warfarin, has the dietary team reviewed the dietary plan including recognition of foods that interact with this medication (e.g., ensuring consistent intake of foods/beverages rich in Vitamin K such as dark leafy greens, etc.)?

Yes No

How often is this dietary review conducted? _____

Has this resident/resident's family been educated on the potential risk factors and signs/symptoms that could indicate excessive bleeding or blood clots due to their medication?

Yes No

Has a fall risk assessment been completed?

Yes No

If yes, are there fall prevention interventions in place?

Yes No

Does this resident have any of these potential risk factors for bleeding related to anticoagulant medication use that could be the cause of an ADE?

Concurrent use of more than one antithrombotic medication such as anticoagulants, antiplatelets, thrombolytics (e.g., use of aspirin while on anticoagulants)

History of stroke or GI bleed

NSAID medication use while on anticoagulants

Antibiotic use while on anticoagulants

Amiodarone use while on anticoagulants

Dietary changes affecting Vitamin K intake (e.g., dark leafy greens)

Does this resident have any of these potential signs/symptoms (S/S) that an ADE might have occurred?

Bleeding	Clots
<input type="checkbox"/> Elevated PT/INR, PTT	<input type="checkbox"/> Abrupt onset hypotension
<input type="checkbox"/> Low platelet count	<input type="checkbox"/> Pain or tenderness and swelling of upper or lower extremity
<input type="checkbox"/> Bruising	<input type="checkbox"/> Increased warmth, edema and/or erythema of affected extremity
<input type="checkbox"/> Nosebleeds	<input type="checkbox"/> Unexplained shortness of breath
<input type="checkbox"/> Bleeding gums	<input type="checkbox"/> Chest pain
<input type="checkbox"/> Prolonged bleeding from wound, IV or surgical sites	<input type="checkbox"/> Coughing
<input type="checkbox"/> Blood in urine, feces or vomit	<input type="checkbox"/> Hemoptysis
<input type="checkbox"/> Coughing up blood	<input type="checkbox"/> Feelings of anxiety or dread

Should this resident experience any of the S/S above, is there a documented process and procedure for how this is to be communicated to the medical provider and what are the next steps to treat the resident?

Yes No

Is the resident's care plan updated to reflect anticoagulant use, potential risks and adverse effects along with appropriate interventions?

Yes No

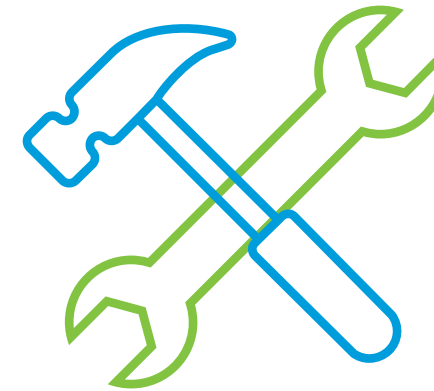
Additional Considerations:

- 'No' responses are indicators that improvement may be needed. We recommend the QAA committee/QAPI team review this completed tool and follow required QAPI improvement practices. Please feel free to contact Telligen for support and assistance.
- Confirm all staff have been educated on the S/S of ADEs related to anticoagulation use.
- Ensure nursing staff have been educated on the processes/procedures related to anticoagulation use.
- Is there an auditing process to confirm compliance to training/education and documentation related to anticoagulant use?
- Incorporate this information and other potential triggers into your EHR system if applicable.
- Is there a system in place to alert physicians and nursing staff when anticoagulants are combined with other drugs which increase the risk of bleeding?

This material was prepared by Telligen, the Quality Innovation Network-Quality Improvement Organization, under contract with the Centers for Medicare & Medicaid Services (CMS), an agency of the U.S. Department of Health and Human Services (HHS). Views expressed in this material do not necessarily reflect the official views or policy of CMS or HHS, and any reference to a specific product or entity herein does not constitute endorsement of that product or entity by CMS or HHS. This material is for informational purposes only and does not constitute medical advice; it is not intended to be a substitute for professional medical advice, diagnosis or treatment. 12SDW-QIN-07/13/23-4928

Additional Tools

- [CMS Adverse Events in Nursing Homes](#)
 - CMS Adverse Drug Event Trigger Tool
- [All Cause Harm Change Package](#)
- [Medication Safety Clinical Teach-Back Cards](#)



High-Risk Medication ECHO® Series Resources

There are seven sessions which share key information and strategies focused on medication management, resident safety and quality of care

- Review each session's summary and prioritize improvement needs
- Watch each session recording
- Use the tools and resources
- Implement the call to action under each session title



Session One: Regs and Meds and Errors - Oh My!

Session Two: Adverse Drug Events

Session Three: Behavioral Support for Residents in a Long-Term Care Setting

Session Four: Beyond Meds: Meeting the Needs of Elders

Session Five: Gradual Dose Reduction (GDR) for High-Risk Medications

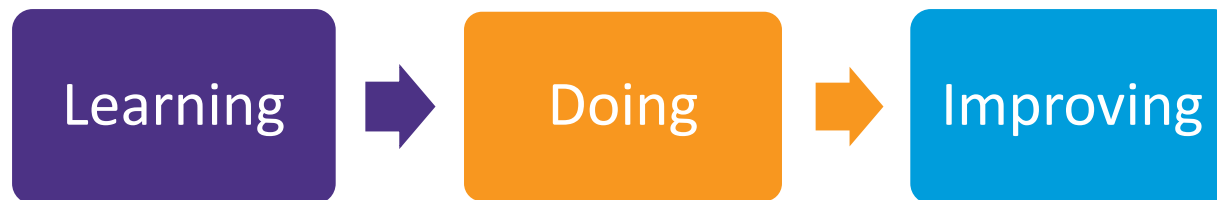
Session Six: Communication Across the Care Continuum

Session Seven: Communicating with Residents and Families

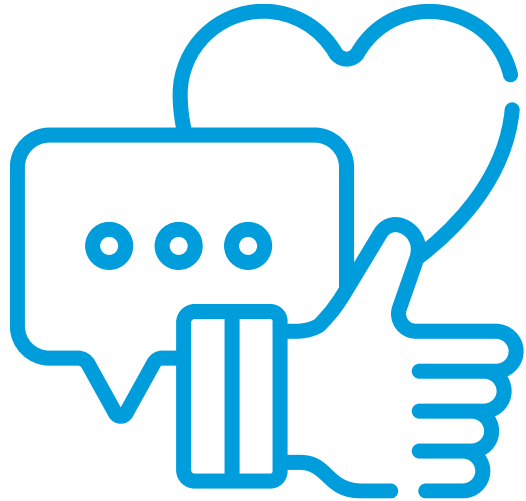
Download the Nursing Home Resource Guide for Adverse Drug Events

Next Steps

- Use Slide 8 to start a team discussion of the current state
- Use the tool shared today for 2-3 residents in your facility
- Review resources
- Determine action steps based on the use of the tool and resources
- Come back to Session 3 next week and share how it worked/what you discovered



How Did We Do? Let Us Know:



Please fill out the poll before logging off

Upcoming ECHO[®] LTC Series for Medication Management of Blood Thinners

Have lunch with us for 30 minutes on the following Wednesdays at 11:30 a.m. MT/12:30 p.m. CT:

ECHO[®] Session Dates and Topics

- Session 3: August 16, 2023 – Communication with residents and representatives
- Session 4: August 23, 2023 – Communication with prescribers, pharmacists and others outside the facility



Register here:

<https://telligen.zoom.us/meeting/register/tZ0ufu-orTwoGN0sUjZgaMnbutLkmgL4kn-N#/registration>

Access prior session presentations and recordings [here!](#)

Project ECHO® Series on Anticoagulant Best Practices for Prescribers and Pharmacists

Taking place for 30 minutes on the following Thursdays at 11:30 a.m. MT/12:30 p.m. CT:
ECHO® Session Dates and Topics

- Session 2: August 10, 2023 – Warfarin prescribing practices
- Session 3: August 17, 2023 – Uses for Direct Oral Anticoagulants (DOACs)



Learn more and register here:

https://telligen.zoom.us/meeting/register/tZ0odu2hpjMoGtchn8_rv_O3olhyUt6Uhrx#/registration

Access prior session presentations and recordings [here!](#)

Contact Us

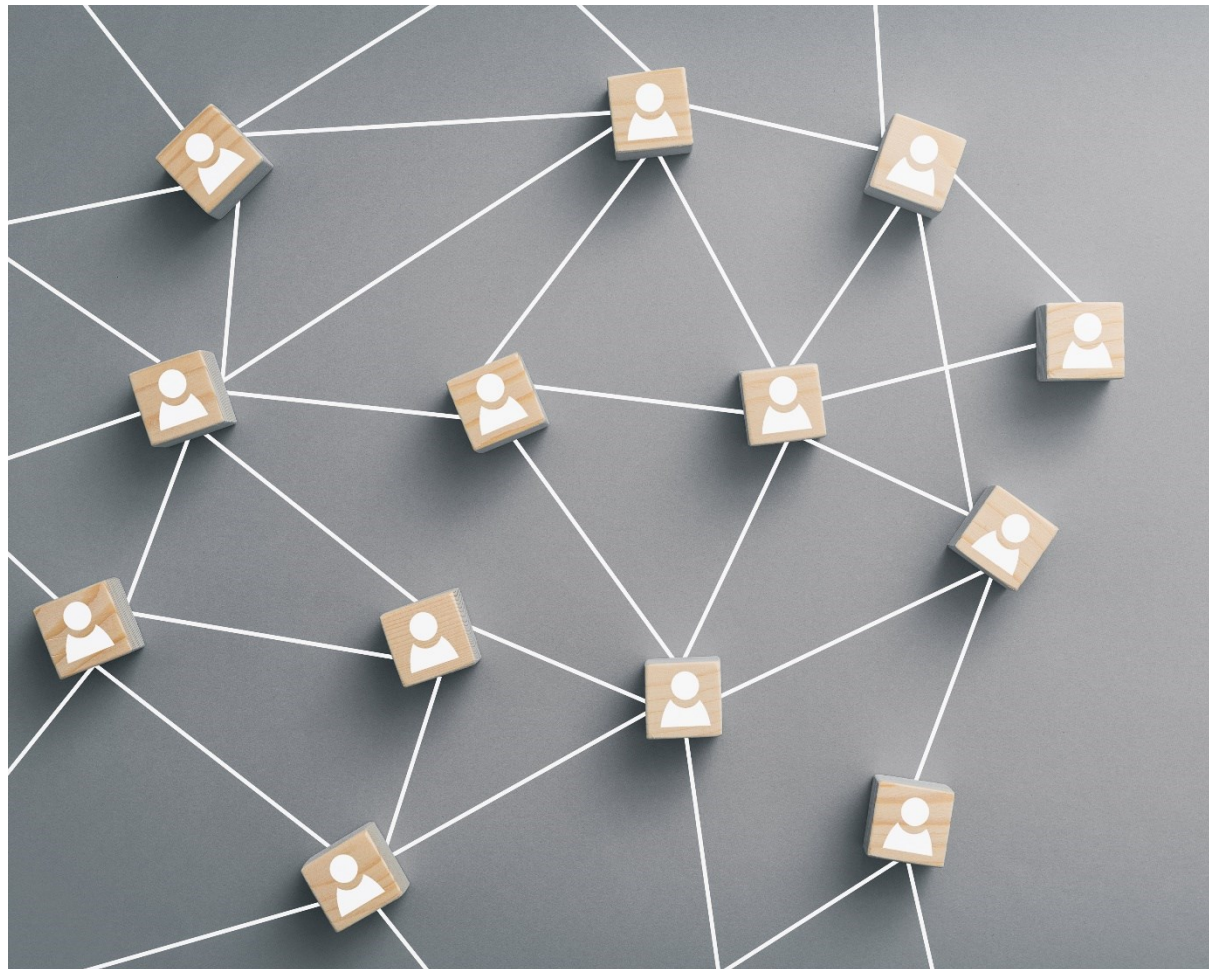


- Nursing Home Team nursinghome@telligen.com
- General Inquiries | QIConnect@telligen.com
- www.telligenqiconnect.com



This material was prepared by Telligen, a Quality Innovation Network-Quality Improvement Organization, under contract with the Centers for Medicare & Medicaid Services (CMS), an agency of the U.S. Department of Health and Human Services (HHS). Views expressed in this material do not necessarily reflect the official views or policy of CMS or HHS, and any reference to a specific product or entity herein does not constitute endorsement of that product or entity by CMS or HHS. This material is for informational purposes only and does not constitute medical advice; it is not intended to be a substitute for professional medical advice, diagnosis or treatment. 12SOW-QIN-08/01/23-4947

Let's Chat!



If you are able, we would love for you to stay on for the next 15 minutes to have some further discussion.

If you need to leave, we will see you next week!